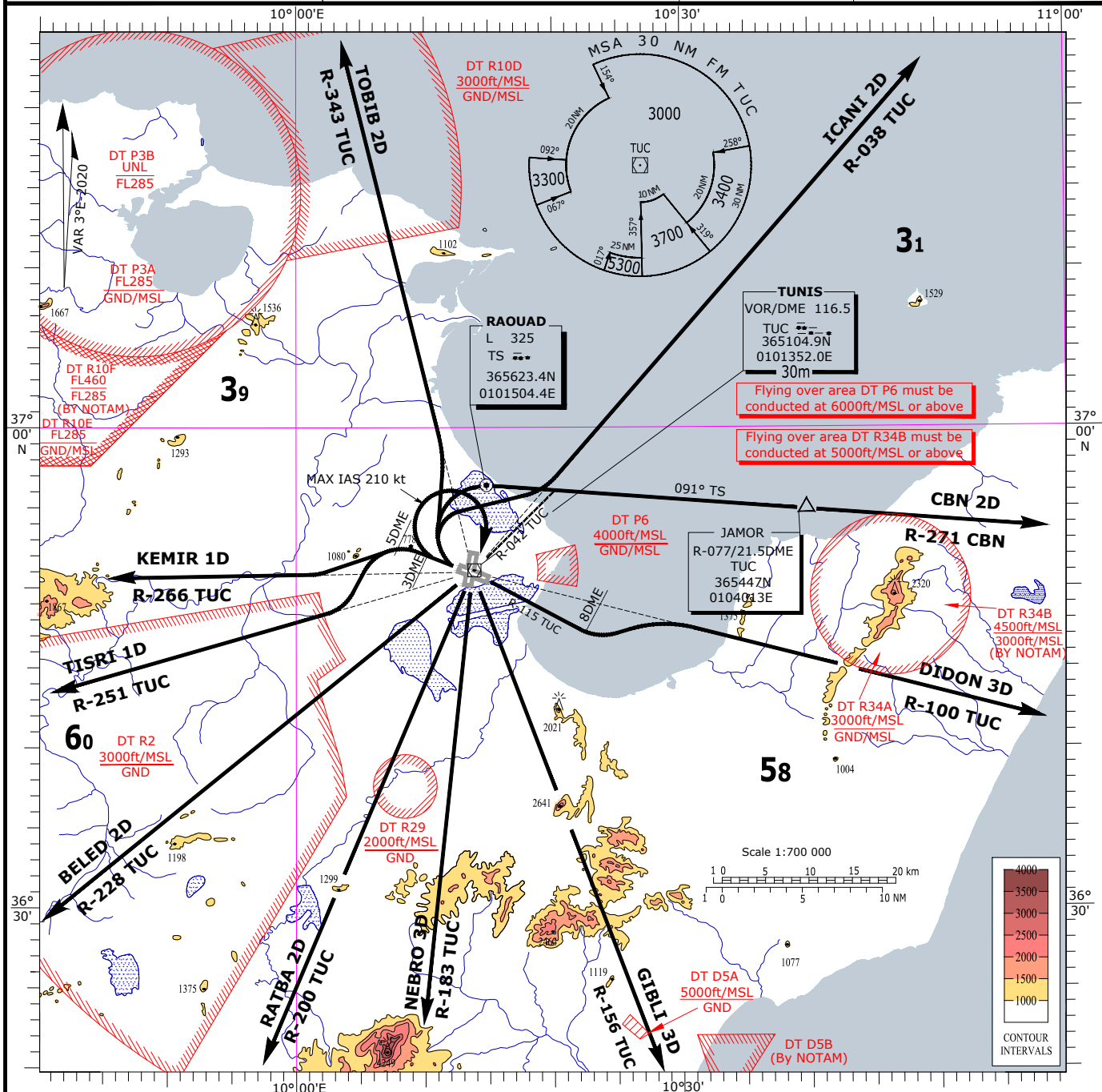


STANDARD DEPARTURE CHART
INSTRUMENT (SID) - ICAOTRANSITION ALTITUDE 6000 ft
BEARINGS AND TRACKS ARE MAGNETIC
ELEVATION AND ALTITUDE IN ftTWR 118.1
APP 121.2TUNIS-Carthage
SID RWY 29

SID RWY 29	ROUTING	REMARKS
TOBIB 2D	After take off, turn right to intercept and follow R-343 TUC VOR to TOBIB.	-Minimum climb gradient = 365ft/NM (slope 6%) until 3000ft. If unable to comply advise ATC
ICANI 2D	After take off, turn right to intercept and follow R-038 TUC VOR to ICANI.	
CBN 2D	After take off, turn right to TS locator, follow bearing 091° TS to CBN VOR (R-271 inbound CBN).	
DIDON 3D	After take off, climb straight ahead. At 1500ft or 3 DME TUC (Whichever is first), turn right to TUC VOR (Do not overshoot R-042, MAX IAS 210kt, cross TUC VOR at 3000ft or above). Follow R-115 TUC VOR. At 8 DME, turn left to intercept and follow R-100 TUC VOR to DIDON.	-MAX IAS 250kt below FL 100
GIBLI 3D	After take off, climb straight ahead. At 1500ft or 3 DME TUC (Whichever is first), turn right to TUC VOR (Do not overshoot R-042, MAX IAS 210kt, cross TUC VOR at 3000ft or above). Follow R-156 TUC VOR to GIBLI.	
NEBRO 3D	After take off, climb straight ahead. At 1500ft or 3 DME TUC (Whichever is first), turn right to TUC VOR (Do not overshoot R-042, MAX IAS 210kt, cross TUC VOR at 3000ft or above). Follow R-183 TUC VOR to NEBRO.	
RATBA 2D	After take off, climb straight ahead. At 1500ft or 3 DME TUC (Whichever is first), turn right to TUC VOR (Do not overshoot R-042, MAX IAS 210kt, cross TUC VOR at 3000ft or above). Follow R-200 TUC VOR to RATBA.	-Noise abatement procedures : See subsection DTTA AD 2.21 -No turn permitted below 500 ft
BELED 2D	After take off, climb straight ahead. At 1500ft or 3 DME TUC (Whichever is first), turn right to TUC VOR (Do not overshoot R-042, MAX IAS 210kt, cross TUC VOR at 3000ft or above). Follow R-228 TUC VOR to BELED.	
TISRI 1D	After take off, climb straight ahead. At 5 DME TUC, turn left to intercept and follow R-251 TUC VOR to TISRI.	
KEMIR 1D	After take off, climb straight ahead. At 5 DME TUC, turn left to intercept and follow R-266 TUC VOR to KEMIR.	